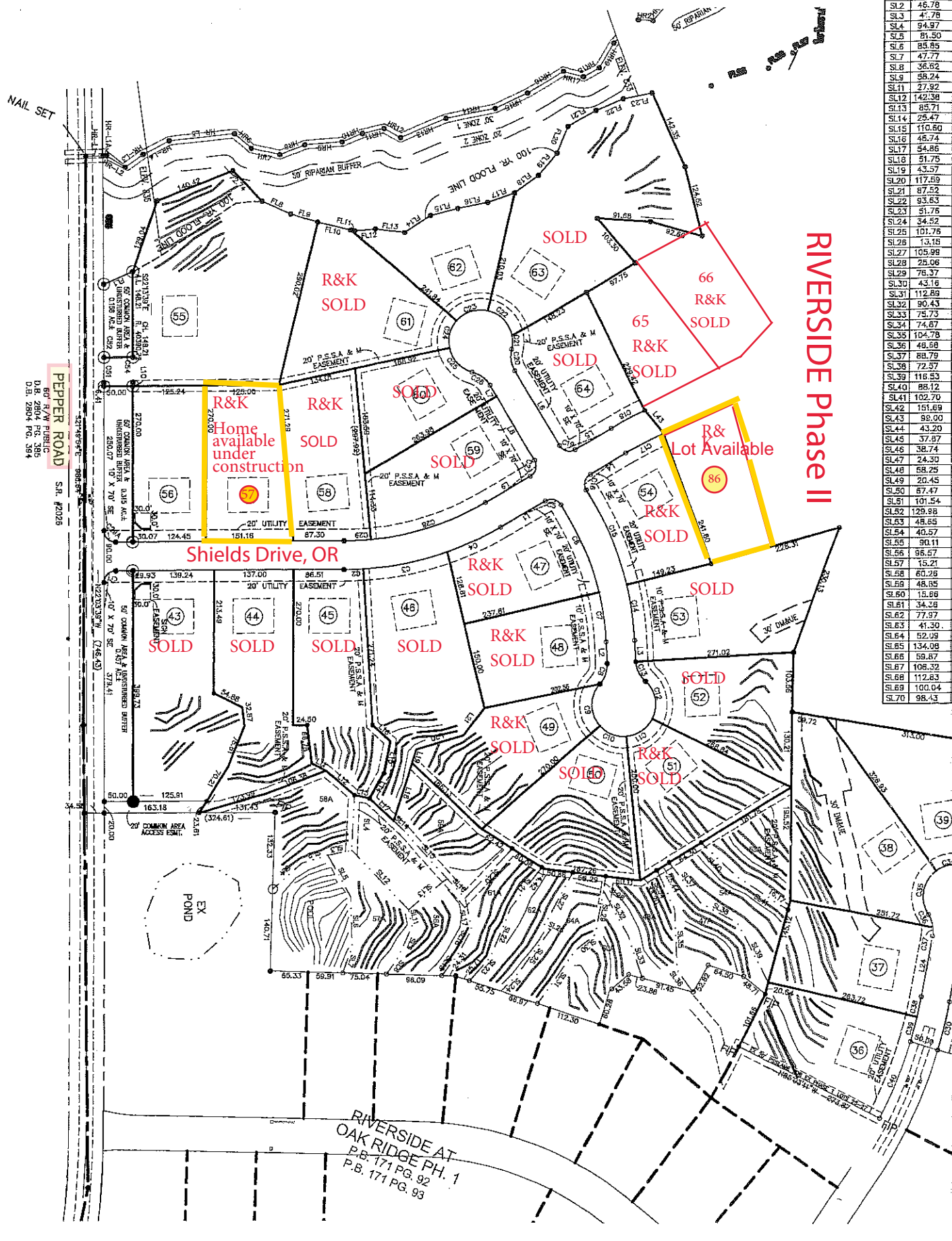


SEPTIC LOT LINE	LENGTH
SL1	67.19
SL2	45.78
SL3	47.78
SL4	94.97
SL5	81.50
SL6	85.85
SL7	47.77
SL8	36.62
SL9	58.24
SL11	27.92
SL12	142.38
SL13	85.71
SL14	25.47
SL15	110.60
SL16	45.74
SL17	54.86
SL18	51.76
SL19	43.57
SL20	117.89
SL21	87.52
SL22	93.63
SL23	91.76
SL24	34.52
SL25	101.76
SL26	13.16
SL27	105.99
SL28	25.06
SL29	76.37
SL30	43.16
SL31	112.89
SL32	90.43
SL33	75.73
SL34	74.67
SL35	104.78
SL36	46.68
SL37	88.79
SL38	72.57
SL39	116.53
SL40	88.12
SL41	102.70
SL42	151.69
SL43	99.00
SL44	43.20
SL45	37.87
SL46	38.74
SL47	24.30
SL48	69.75
SL49	20.45
SL50	67.47
SL51	101.54
SL52	129.98
SL53	48.65
SL54	40.57
SL55	90.11
SL56	95.57
SL57	15.21
SL58	60.28
SL59	48.85
SL60	15.66
SL61	34.38
SL62	77.97
SL63	41.30
SL64	52.09
SL65	134.08
SL66	59.87
SL67	106.32
SL68	112.83
SL69	100.04
SL70	98.43

RIVERSIDE Phase II



PEPPER ROAD S.R. #2028
 60' R/W PUBLIC
 D.B. 2804 PG. 395
 D.B. 2804 PG. 394

RIVERSIDE AT
 OAK RIDGE PH. 1
 P.B. 171 PG. 92
 P.B. 171 PG. 93